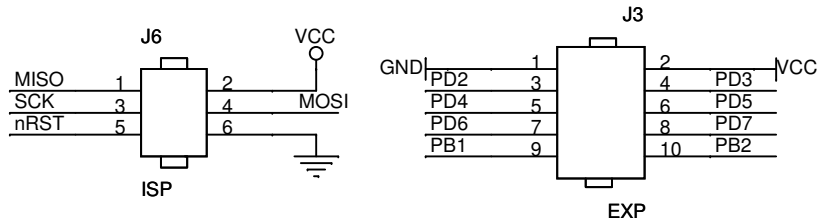
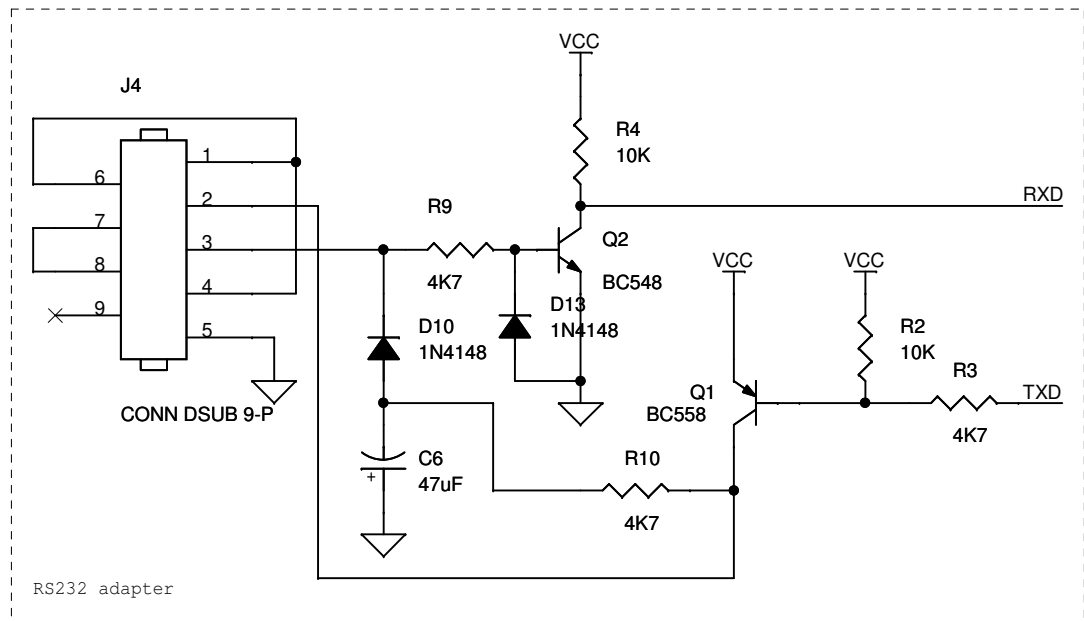


To sheet 2



(C) 2006, Daniel Quintero <daniel@itoobot.com>

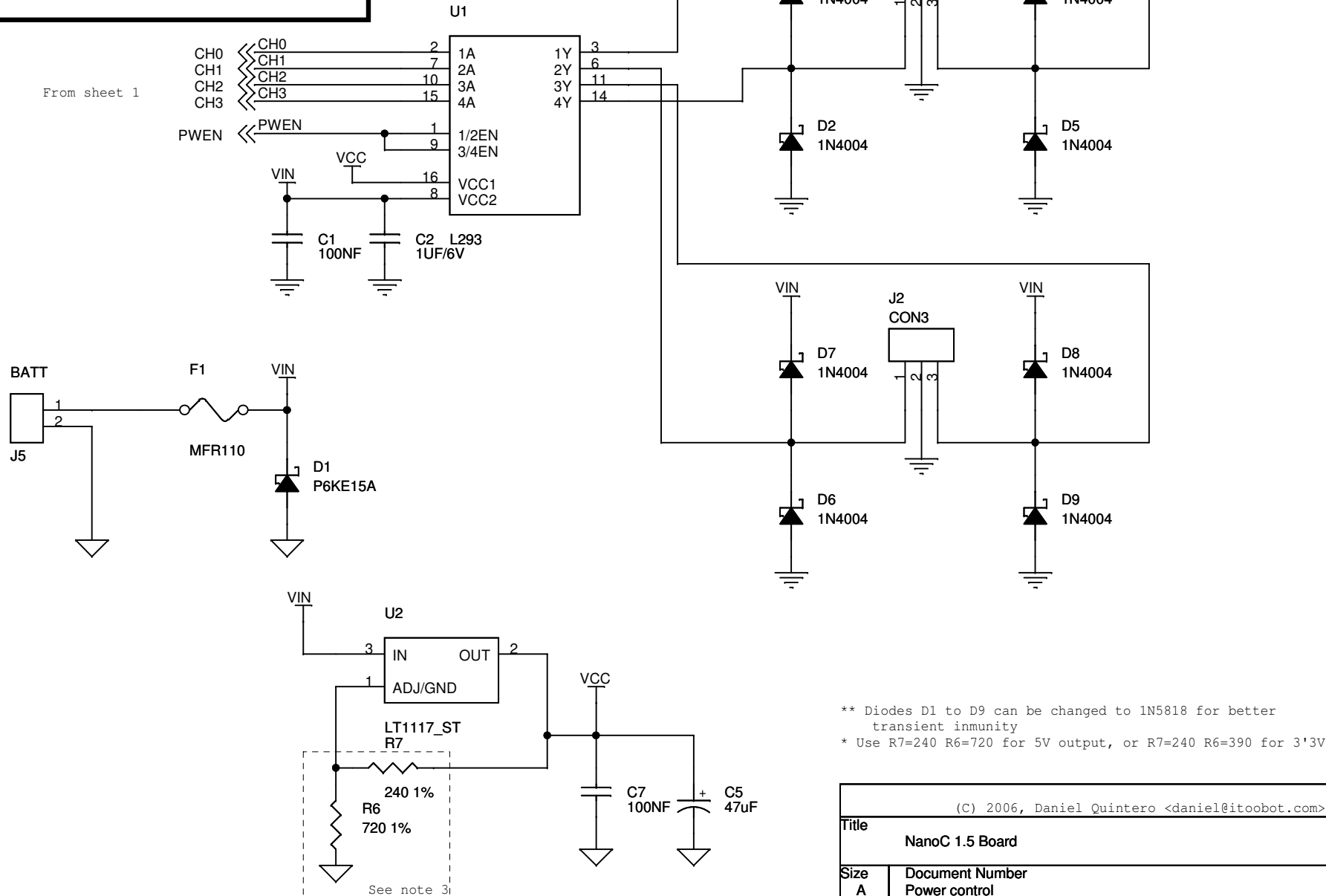
Title		
NanoC 1.5 Board		
Size	Document Number	Rev
A	Main controller and RS232 driver	1.5
Date:	Wednesday, May 03, 2006	Sheet 1 of 2

Motor pins :

Motor	Drive L	Drive R
0	PB1	PD6
1	PB2	PD7

Direction	Drive L	Drive R
Brake	0	0
Brake	1	1
Forward	PWM	0
Backwards	-PWM	1

From sheet 1



** Diodes D1 to D9 can be changed to 1N5818 for better transient immunity
 * Use R7=240 R6=720 for 5V output, or R7=240 R6=390 for 3'3V

(C) 2006, Daniel Quintero <daniel@itoobot.com>		
Title NanoC 1.5 Board		
Size A	Document Number Power control	Rev 1.5
Date:	Wednesday, May 03, 2006	Sheet 2 of 2