



# The3dGarden

Winter Trees v2 Collection



## Winter Trees And Bushes 2

A collection of **fourteen species** of snowy winter trees and bushes. There are **three variations** available for each of the species to create a comprehensive library of **42 plants**.

This library is designed to be tightly integrated with Forest Pack. After installation all plants will be available in the **Forest Pack library** with materials for **V-Ray** and **Corona** to make adding plants to your scenes as quick and easy as possible.



Rocky Mountain Fir



Catalpa



Mulberry



# Specification

- Compatible with 3ds Max 2014 and higher
- Materials included for V-Ray and Corona Render
- Highly realistic photoscanned trunks
- Diffuse, glossiness, normal, opacity and translucency maps provided
- Integrated with the Forest Pack library



European Ash



European Hornbeam



Plane Tree





Scotch Elm



Tilia



Whitebeam





Willow

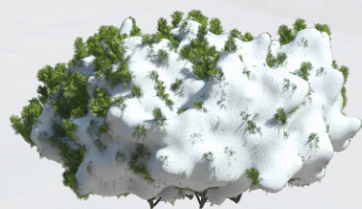


Golden Euonymus



Spanish Jasmine





Thuja bush



Thuja Orientalis







# Rocky Mountain Fir

*Abies Lasiocarpa Compacta* is an excellent specimen for the border or rockery. Lovely pale blue needles are produced on a compact, irregular pyramid, eventually making a small tree, definitely in the top ten of dwarf and slow growing conifers. Height 90cm x Spread 60cm (3ft x 2ft) approx. in 10 yrs.

The models are compatible with the following

- **3ds Max 2014** and higher
- **V-Ray 3.0** and higher
- **Corona Render 1.6** and higher



Rocky Mountain Fir 01



Rocky Mountain Fir 02



Rocky Mountain Fir 03



# Catalpa

*Catalpa bignonioides*, *Catalpa bignonioides* is a species of *Catalpa* that is native to the southeastern United States in Alabama, Florida, Georgia, Louisiana, and Mississippi. Common names include southern catalpa, cigartree, and Indian-bean-tree.

The models are compatible with the following

- **3ds Max 2014** and higher
- **V-Ray 3.0** and higher
- **Corona Render 1.6** and higher



Catalpa 01



Catalpa 02



Catalpa 03



*Morus*, a genus of flowering plants in the family Moraceae, comprises 10–16 species of deciduous trees commonly known as mulberries, growing wild and under cultivation in many temperate world regions. The closely related genus *Broussonetia* is also commonly known as mulberry, notably the paper mulberry.

The models are compatible with the following

- **3ds Max 2014** and higher
- **V-Ray 3.0** and higher
- **Corona Render 1.6** and higher



Mulberry 01



Mulberry 02



Mulberry 03



# European Ash

*Fraxinus excelsior*, known as the ash, or European ash or common ash to distinguish it from other types of ash, is a flowering plant species in the olive family Oleaceae. It is native throughout mainland Europe east to the Caucasus and Alborz mountains.

The models are compatible with the following

- **3ds Max 2014** and higher
- **V-Ray 3.0** and higher
- **Corona Render 1.6** and higher



European Ash 01



European Ash 02



European Ash 03



# European Hornbeam

*Carpinus betulus*, commonly known as the European or common hornbeam, is a hornbeam native to Western Asia and central, eastern, and southern Europe, including southern England. It requires a warm climate for good growth, and occurs only at elevations up to 600 metres (1,969 ft). It grows in mixed stands with oak, and in some areas beech, and is also a common tree in scree forests. Hornbeam was also known as 'Yoke Elm'.

The models are compatible with the following

- **3ds Max 2014** and higher
- **V-Ray 3.0** and higher
- **Corona Render 1.6** and higher



European Hornbeam 01



European Hornbeam 02



European Hornbeam 03



# PT Plane Tree

*Platanus* is a genus consisting of a small number of tree species native to the Northern Hemisphere. They are the sole living members of the family Platanaceae.

The models are compatible with the following

- **3ds Max 2014** and higher
- **V-Ray 3.0** and higher
- **Corona Render 1.6** and higher



Plane Tree 01



Plane Tree 02



Plane Tree 03



# Scotch Elm

*Ulmus glabra*, the *wych elm*, Scotch elm or Scots elm, has the widest range of the European elm species, from Ireland eastwards to the Urals, and from the Arctic Circle south to the mountains of the Peloponnese in Greece; it is also found in Iran. A large, deciduous tree, it is essentially a montane species, growing at elevations of up to 1500 m, preferring sites with moist soils and high humidity.

The models are compatible with the following

- **3ds Max 2014** and higher
- **V-Ray 3.0** and higher
- **Corona Render 1.6** and higher



Scotch Elm 01



Scotch Elm 02



Scotch Elm 03



# TI Tilia

*Tilia platyphyllos* is a species of flowering plant in the family Malvaceae (Tiliaceae). It is a deciduous tree, native to much of Europe, including locally in southwestern Great Britain, growing on lime-rich soils. The common names largeleaf linden and large-leaved linden are in standard use throughout the English-speaking world except in the British Isles, where it is widely, but not universally, known as large-leaved lime.

The models are compatible with the following

- **3ds Max 2014** and higher
- **V-Ray 3.0** and higher
- **Corona Render 1.6** and higher



Tilia 01



Tilia 02



Tilia 03



*Sorbus intermedia*, the Swedish whitebeam, is a species of whitebeam found in southern Sweden, with scattered occurrences in easternmost Denmark (Bornholm), the far southwest of Finland, Estonia, Latvia and northern Poland.

The models are compatible with the following

- **3ds Max 2014** and higher
- **V-Ray 3.0** and higher
- **Corona Render 1.6** and higher



Whitebeam 01



Whitebeam 02



Whitebeam 03



# WI Willow

*Salix alba*, the white willow, is a species of willow native to Europe and western and central Asia. The name derives from the white tone to the undersides of the leaves. It is a medium-sized to large deciduous tree growing up to 10–30 m tall, with a trunk up to 1 m diameter and an irregular, often-leaning crown.

The models are compatible with the following

- **3ds Max 2014** and higher
- **V-Ray 3.0** and higher
- **Corona Render 1.6** and higher



Willow 01



Willow 02



Willow 03



GE

# Golden Euonymus

Common bush covered in snow.

The models are compatible with the following

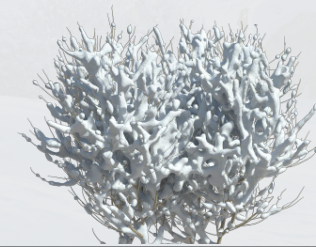
- **3ds Max 2014** and higher
- **V-Ray 3.0** and higher
- **Corona Render 1.6** and higher



Golden Euonymus 01



Golden Euonymus 02



Golden Euonymus 03





# Spanish Jasmine

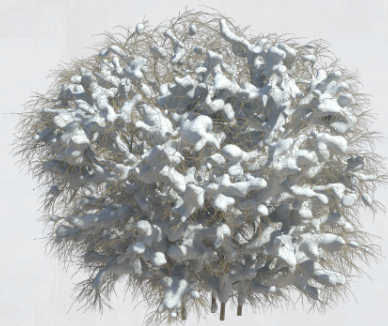
Common bush covered in snow.

The models are compatible with the following

- **3ds Max 2014** and higher
- **V-Ray 3.0** and higher
- **Corona Render 1.6** and higher



Spanish Jasmine 01



Spanish Jasmine 02



Spanish Jasmine 03

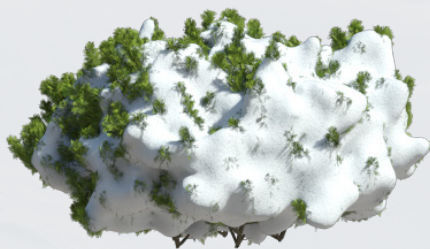


# Thuja Bush

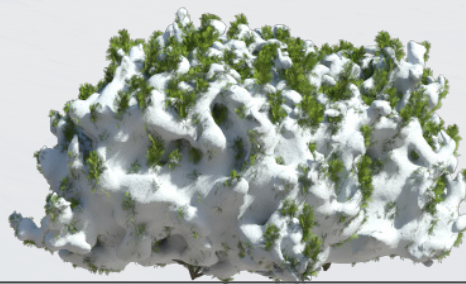
*Thuja* is a genus of coniferous trees in the Cupressaceae. There are five species in the genus, two native to North America and three native to eastern Asia. The genus is monophyletic and sister to *Thujopsis*. Members are commonly known as arborvitae, thujas or cedars.

The models are compatible with the following

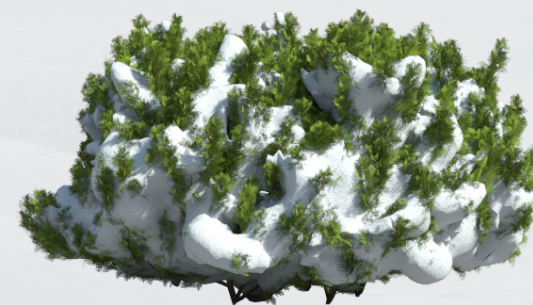
- **3ds Max 2014** and higher
- **V-Ray 3.0** and higher
- **Corona Render 1.6** and higher



Thuja Bush 01



Thuja Bush 02



Thuja Bush 03



OA

# Oriental Arborvitae

*Thuja orientalis* is a conifer, evergreen shrub or tree. Leaves scale-like, bright green but may turn brownish in winter, nearly alike on both sides, those on a main axis glandular, ending in a free spreading point.

The models are compatible with the following

- **3ds Max 2014** and higher
- **V-Ray 3.0** and higher
- **Corona Render 1.6** and higher



Oriental Arborvitae 01



Oriental Arborvitae 02



Oriental Arborvitae 03





#### LEGAL

All 3d models can be purchased / downloaded from [www.itoosoft.com](http://www.itoosoft.com)

Models are royalty-free non-exclusive license. License is personal and NON transferable.

All 3d models can be used for commercial purposes only by owners who bought this collection.

**iToo**  
software